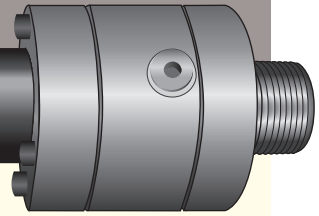




CASE STUDY

UL1369 Listed Aboveground Fuel Piping for Hospital Backup Power Generators.

- Saves Time
- Saves Money
- Increases Installation Options



Product:

DoubleTrac® Stainless Steel Double Containment Fuel Piping for UL1369 Listed Aboveground Fuel Piping for Hospital Power Generators

Location: Pittsburgh, PA



40,000-Gallon Underground Storage Tank.

The University of Pittsburgh Medical Center Presbyterian (UPMC Presby) is located at 200 Lothrop Street, Pittsburgh, PA 15213. It is building a new \$1.5 billion, 17-story addition and is scheduled to be completed in 2026. The 17-story addition will be home to 636 private patient rooms and premier people-focused clinical facilities where UPMC clinical teams and physician-scientists will deliver nationally renowned specialty care that includes transplant, cardiology and cardiac surgery, and neurology and neurosurgery.

When medical facilities lose electrical power, it results in disruption to patient safety and patient care. Many medical facilities are investing in backup power generation to have the capability to provide constant patient care, with no disruption from the loss of power.

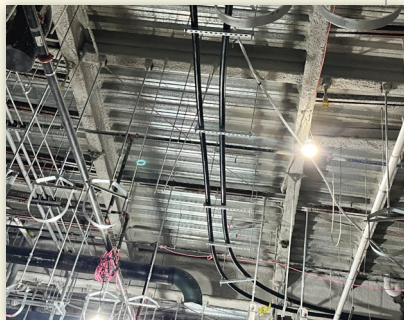
Steel City Fueling Systems, Inc. is located at 2750 Banksville Ave, Pittsburgh, PA 15216, and was awarded the contract to install the backup power generation system.

Steel City Fueling Systems, Inc. is certified to perform fueling system installation, modification, and removal activities in Pennsylvania, West Virginia, and Ohio. They specialize in the installation and maintenance of fueling systems for emergency generators at hospitals, data centers, airports, telecommunication facilities, coal mines, educational and correctional institutions, and mission-critical operation centers.

Bill Brandenstein, President of Steel City Fueling Systems, Inc., was able to convert the specification from Perma Pipe to DoubleTrac® piping because of the UL1369 listing and the 2-hour fire rating. Perma Pipe is a steel over steel socket-welded pipe system, which needs a 2-hour fire-rated enclosure encasing the entire piping run.

The fuel system for the new generators consists of two 40,000-gallon Underground Storage Tanks (UST). Two 400' 2" DoubleTrac® piping runs from the UST, then runs through the building to the rooftop, transitions from 2" DoubleTrac® piping to 1-1/2" DoubleTrac® piping to the generators.

Steel City Fueling Systems, Inc. has installed DoubleTrac® piping several times throughout the years. Bill Brandenstein stated, "I like using DoubleTrac® piping for its ease of Installation and DoubleTrac® piping robustness". Bill also stated, "using DoubleTrac® piping saves the end user several thousand dollars in labor costs because of the ability to pull in one long continuous length of DoubleTrac® piping, from point A to point B".



DoubleTrac® piping is being pulled throughout the building.



2" DoubleTrac® piping hanging on Unistrut Trapeze.

(continued on back)



Omega Flex, Inc. • 451 Creamery Way • Exton, PA 19341

1-800-355-1039

ISO 9001 Registered Company

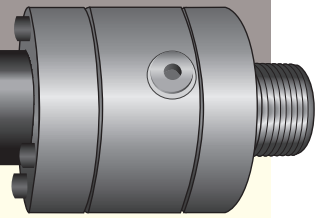
DBT-268 01/26

© 2026 Omega Flex, Inc. All Rights Reserved.



CASE STUDY

UL1369 Listed Aboveground Fuel Piping for Hospital Backup Power Generators.



(continued from front)



1-1/2" and 2" DoubleTrac® piping connected to steel pipe to the generators.

Features and Benefits of DoubleTrac® Piping

The DoubleTrac® piping double containment fuel piping system is optimized for installations in existing building structures. The outer shell is a smooth Nylon 12, which allows DoubleTrac® piping to slide easily over and around structures during installation. The outside diameter of the DoubleTrac® piping is equivalent to steel piping (NPS), so off-the-shelf pipe hangers and mounts can be used. DoubleTrac® piping is available in 1", 1 1/2", and 2" sizes to accommodate most fuel system requirements. It is sold in off-the-shelf reel quantities for quick delivery and can be ordered in custom lengths to accommodate long continuous runs.

Type 316 stainless steel Tee and 90-degree fittings are available for multi-branch systems or installations requiring bending below the DoubleTrac® piping minimum bend radius. All DoubleTrac® piping fittings carry interstitial communication internally, and are not required to be installed within containment sumps for aboveground applications.

DoubleTrac® piping's innovative double wall design includes a primary interior layer of zero permeation, highly corrosion-resistant corrugated 316 stainless steel with an outer EFEP barrier layer bonded to a Nylon 12 protective layer. DoubleTrac® piping can be considered a "green product" because the stainless-steel piping has zero permeation, and the EFEP/Nylon 12 outer jacket has nearly zero permeation (.000001%). DoubleTrac® piping is a true future fuel piping system and is the best choice for fuel oil, low-sulfur diesel blends, biodiesel, gasoline, and aviation and jet fuels.

DoubleTrac® piping and Fittings are UL 971A (for belowground flammable fuels) and UL 1369 listed (for aboveground flammable fuels).

DoubleTrac® piping passed a 2-hour Fire test per UL 1369 listing.

DoubleTrac® piping passed General-use Fuels, B100, DEF, and Ammonia Hydroxide per UL 1369 listing.

DoubleTrac® piping has a patented mechanically field-attachable fitting that creates a metal-to-metal seal that requires NO O-Rings, which have a finite lifespan and can degrade over time.

Omega Flex, Inc. offers a team of in-house engineers dedicated to assisting with piping layouts and answering technical questions about the DoubleTrac® piping system.

Omega Flex, Inc., offers no-cost training and certification of new installers.

LIMITED WARRANTY: ALL SALES ARE SUBJECT TO OUR LIMITED WARRANTY, WHICH IS AVAILABLE AT [HTTPS://OMEGAFLEXCORP.COM/LEGAL-INFORMATION](https://omegaflexcorp.com/legal-information) AND

